



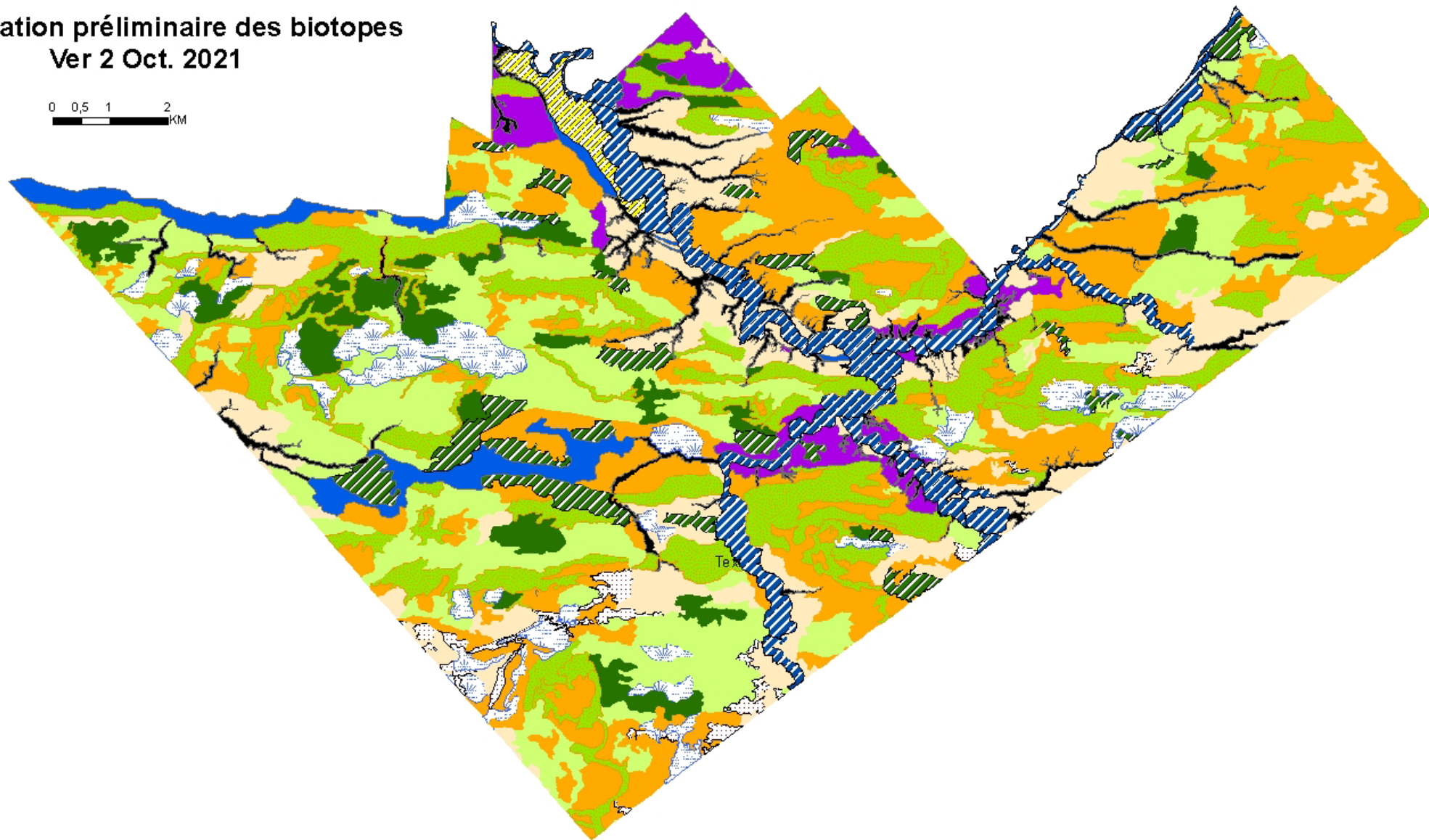
Cartographie écologique au 1:20 000

Contribution du MELCC

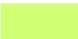








Classification préliminaire des biotopes

Ver 2 Oct. 2021

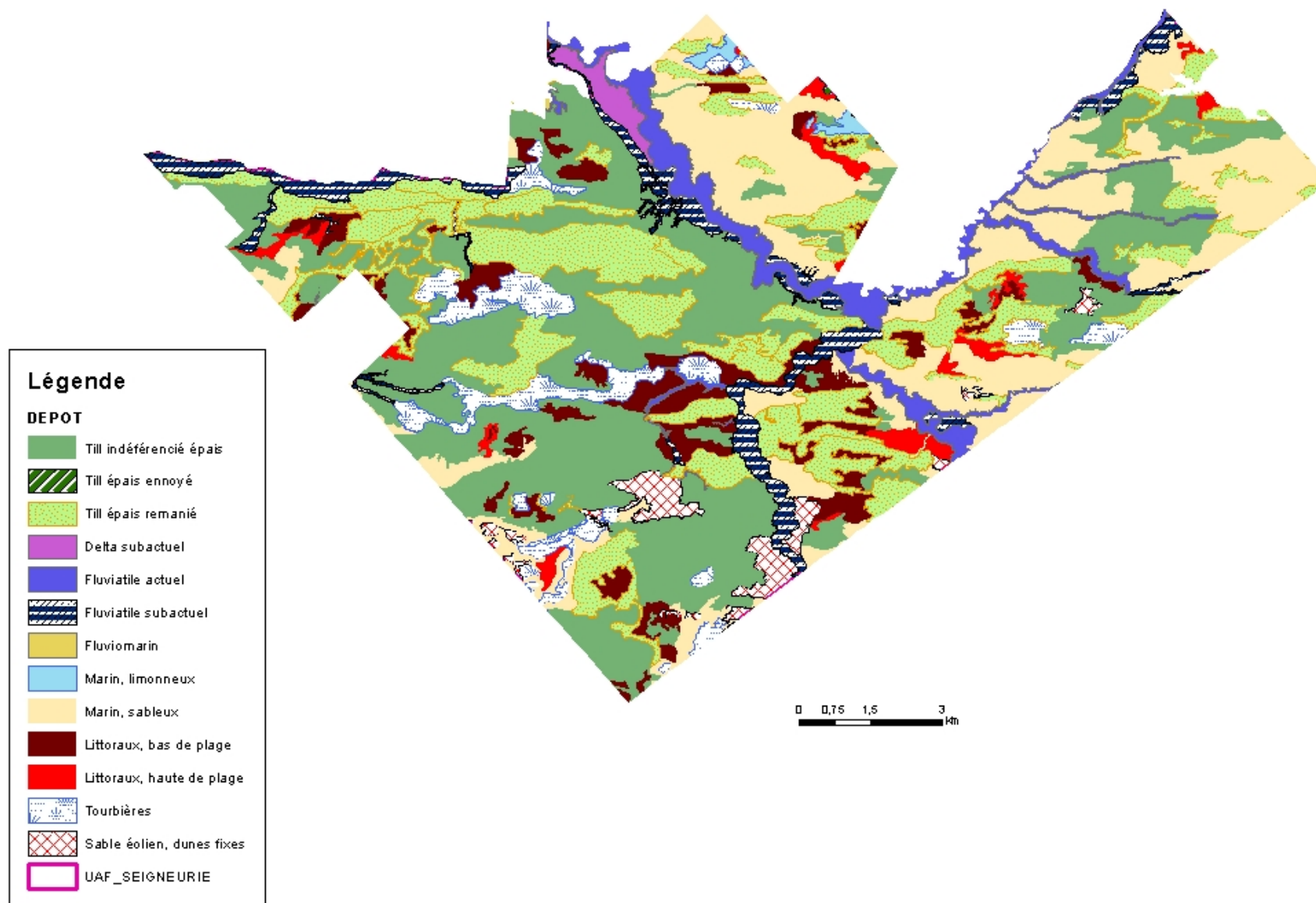
0 0,5 1 2
KM



Légende

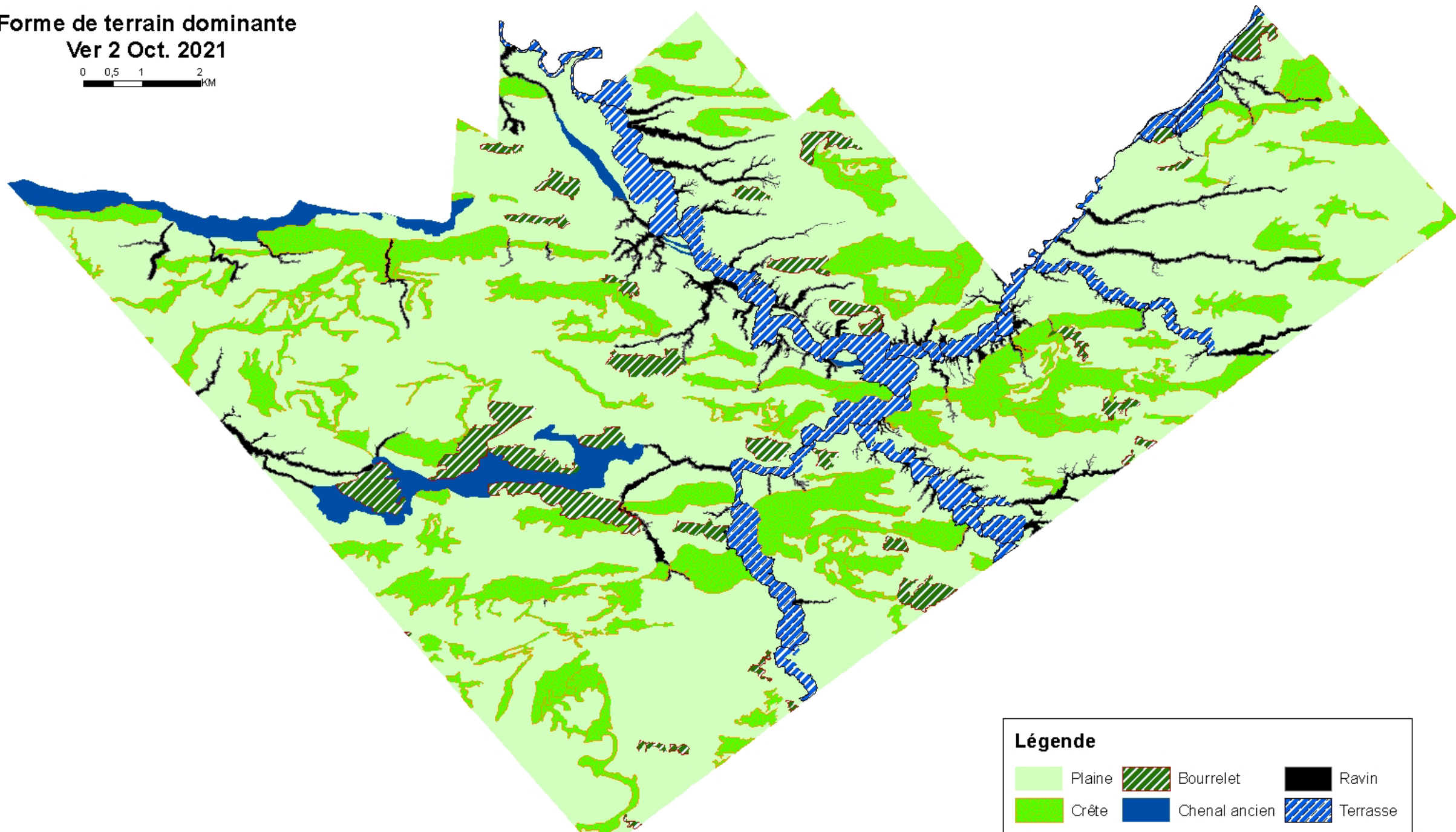
- | | | |
|---|--|---|
|  1- Plaine de dépôt glaciaire bien drainé |  5- Plaine de dépôt marin sableux bien drainé |  9- Terrasse de dépôt fluviatile bien drainé |
|  2- Plaine de dépôt glaciaire mal drainé |  6- Plaine de dépôt marin sableux mal drainé |  10- Chenal ancien de dépôt fluviomarín mal drainé |
|  3- Crête de dépôt glaciaire remanié bien drainé |  7- Plaine de dépôt marin limoneux mal drainé |  11- Tourbière |

Découpage des entités topographiques, secteur de la Seigneurie de Lotbinière









Forme de terrain dominante
Ver 2 Oct. 2021

0 0,5 1 2 KM



Légende

- | | | |
|--|---|--|
|  Plaine |  Bourrelet |  Ravin |
|  Crête |  Chenal ancien |  Terrasse |

Modèle théorique de la déglaciation de la FSL

